

Technical Bulletin

Carton Clamp Contact Pad Mounting Hole Sleeve Service Kit 676841

Models: All Carton Clamps

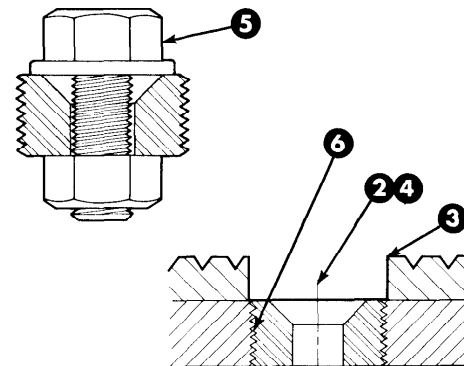
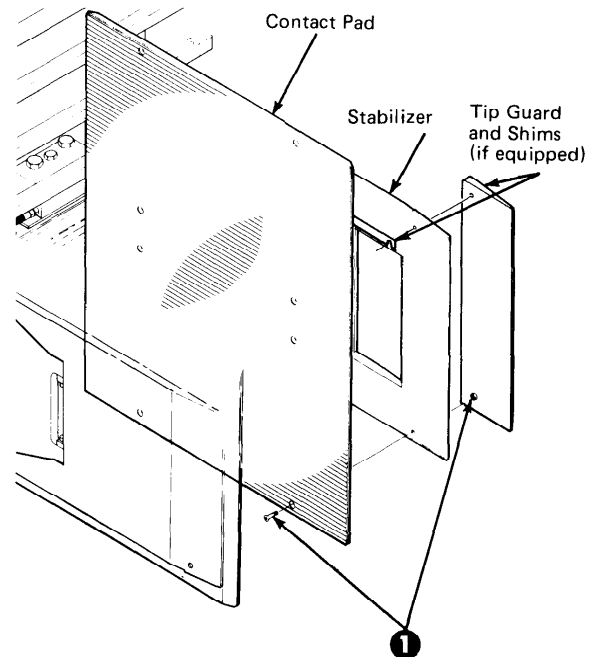
Problem: The contact pad mounting holes may become enlarged due to the capscrews and nuts not being properly tightened.

Solution: Install the sleeves included in the service kit to the worn holes as instructed below.

1. Remove the capscrews and nuts fastening the contact pad to the stabilizer. Remove the contact pad and tip guard (if equipped). For reassembly, tighten the capscrews to a torque of 60-65 ft.-lbs. (80-88 N·m).

NOTE: If there are shims between the stabilizer and contact pad, they must be installed in their original position.

2. Tap drill the worn contact pad holes using a 1-5/32" (29.5 mm) drill. Maintain the hole center distances of the stabilizer.
3. Remove the rubber around the drilled holes to 1-1/4" dia.
4. Tap the drilled holes with a 1-1/4"-12UNF-2B tap.
5. Install a 1/2" capscrew, nut and washer to each sleeve for installation.
6. Apply Loctite Primer T and Loctite 277 to the contact pad and sleeve threads. Install the sleeve, then remove the capscrew, nut and washer. Repeat for additional sleeves.
7. To reassemble, reverse above procedures.



NOTE: This information should not be interpreted as the basis for warranty claims unless so designated.
Part No. 676839

cascade[®] corporation

For Technical Assistance . . .

Call: 1-800-CASCADE or 503-666-1518

OR

Write: Cascade Corporation, P.O. Box 20187, Portland, OR 97220

To Order Parts . . .

Call: 513-322-1199

OR

Write: Cascade Corporation, P.O. Box 360 Springfield, OH 45505