

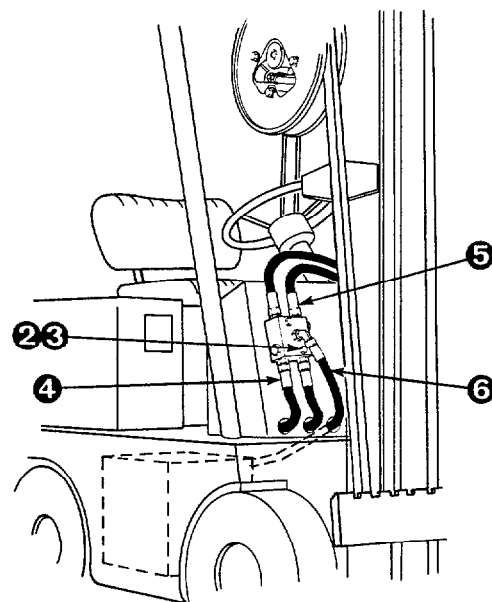
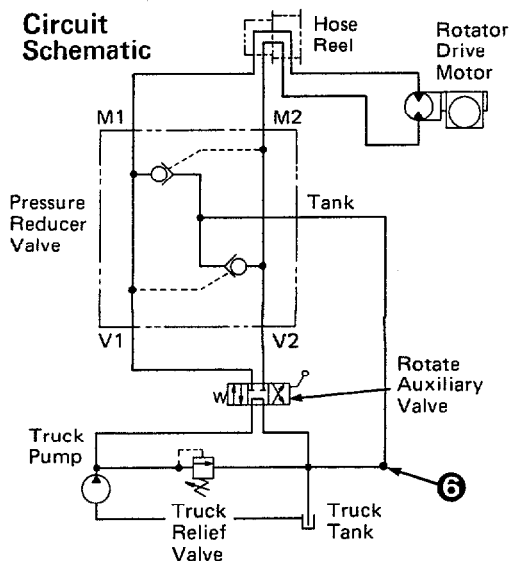
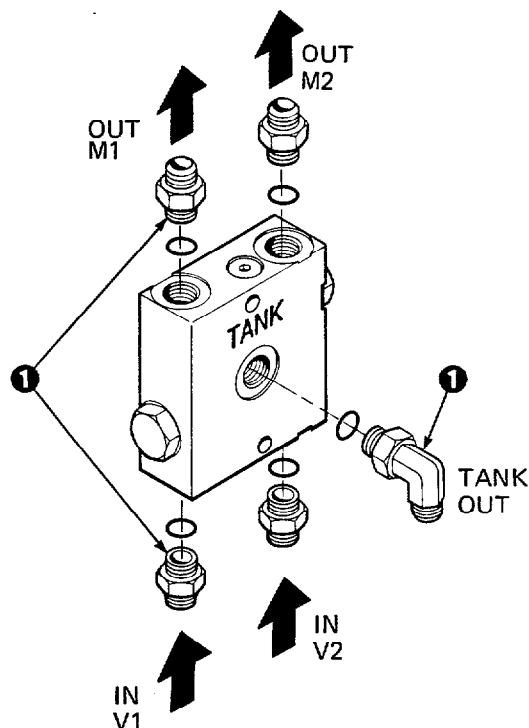


Installation Instructions

Rotator Motor Back Pressure Reducer Valve 200580

This sheet provides installation instructions and replacement parts list for Cascade Rotator Motor Back Pressure Reducer Valve 200580. The valve relieves back pressure at the rotator motor in both directions of flow. This prevents over pressuring the motor and improves motor life on trucks with auxiliary valves that trap high pressure in the rotate circuit.

- 1 Install five 37° JIC/O-ring fittings in the pressure reducer valve body ports. Fittings used will be determined by the size of the truck supply hoses. The valve body has No. 8 O-ring ports. The tank hose and fittings must be No. 8.
- 2 Determine a pressure reducer valve mounting location on the truck cowl. The valve must clear the mast when fully tilted back. Use the shortest hose route possible from the valve fittings to the truck valve fittings.
- 3 Mount the pressure reducer valve on the cowl using 5/16 in. diameter capscrews (user supplied).
- 4 Make two hose assemblies (size determined by truck supply hoses) to run from the pressure reducer valve bottom fittings (V1 and V2) to the truck valve fittings. Install the hoses.
- 5 Connect the motor supply group hoses to the pressure reducer valve top output fittings (M1 and M2).
- 6 Make a No. 8 hose assembly to run from the pressure reducer valve tank fitting (Tank) to tee into the tank main return hose.
- 7 Before returning the truck/attachment to service operation, test all functions to assure they perform correctly.



Part No. 201588

cascade®

For Technical Assistance . . .

Call: 1-800-CASCADE or 503-669-6300

OR

Write: Cascade Corporation, P.O. Box 20187, Portland, OR 97220

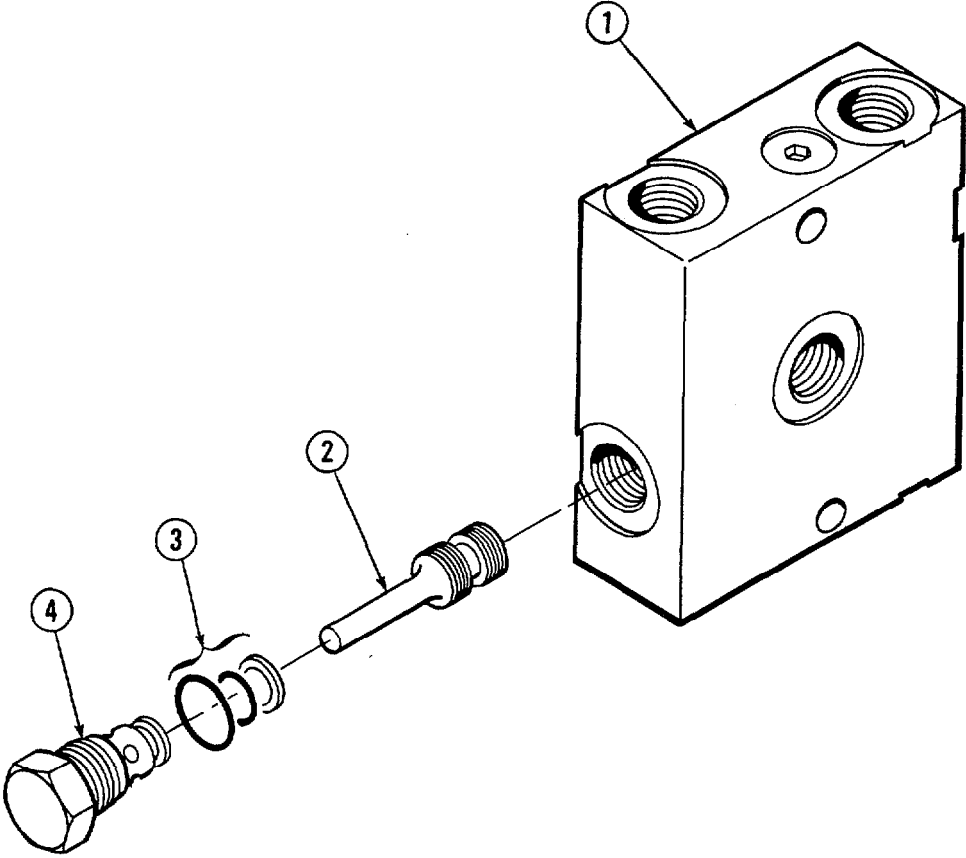
To Order Parts . . .

Call: 513-322-1199

OR

Write: Cascade Corporation, P.O. Box 360, Springfield, OH 45505

Parts List



REF	QTY	PART NO	DESCRIPTION
		200580	Pressure Reducer Valve Assembly
1	1	201059	Valve Body
2	2	201058	Piston
3	2	682170	Service Kit
4	2	201057	Cartridge