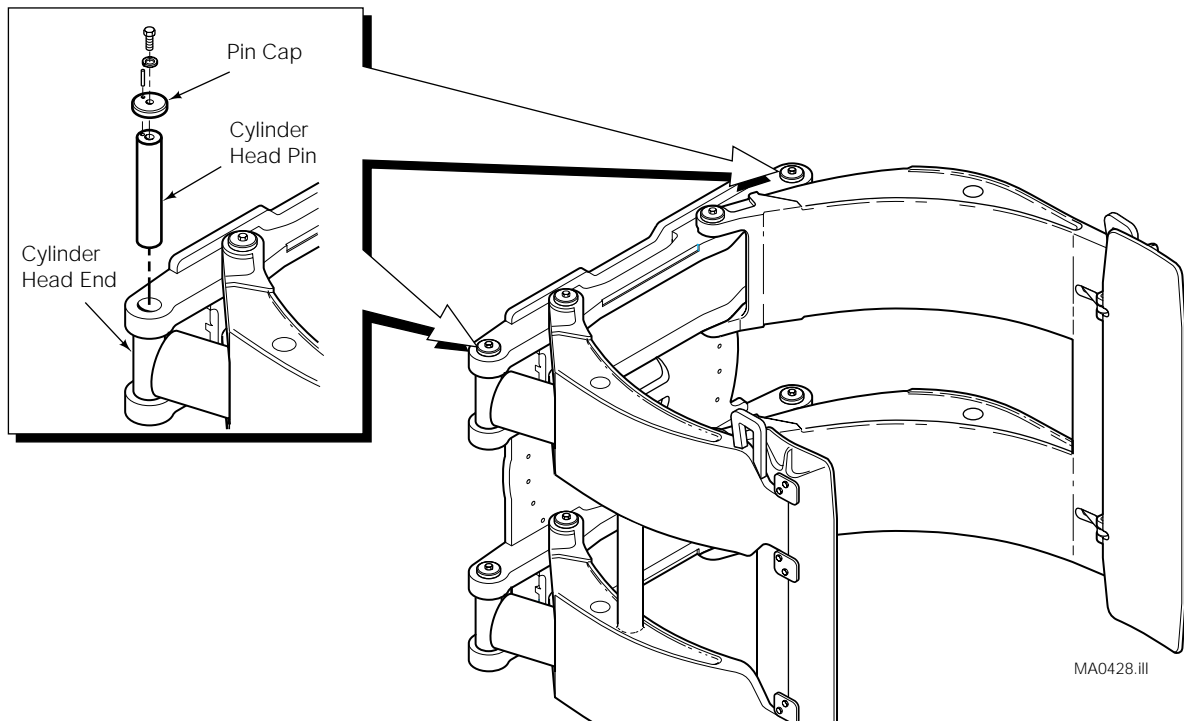


Technical Bulletin

60G Paper Roll Clamp Cylinder Head End Pivot Pins

There is a possibility of paint overspray in the cylinder head end pivot holes on units shipped before March 1997. Over time the paint may get sticky or hard in the hole and the pivot pins become very difficult to remove. To avoid pin removal problems on the early clamps, follow the steps below.

- 1 Remove the capscrews and pin cap from one of the cylinder head end pins.
- 2 Use a soft metal drive tool and mallet to drive the cylinder head pins out of the cylinder and frame. Do not damage the bearing.
- 3 Remove all traces of paint from the pin and the cylinder head end bore using steel wool and solvent.
- 4 Apply an anti-seize compound such as Chesterton 725 Anti-Seize Compound to the cylinder head end bore.
- 5 Reassemble the components. Tighten the pin cap capscrews to a torque of 35 ft.-lbs. (48 Nm).



NOTE: This information should not be interpreted as the basis for warranty claims unless so designated.

cascade®

For Technical Support . . .

Call: 1-800-227-2233

OR

Write: Cascade Corporation, P.O. Box 20187, Portland, OR 97220

© Cascade Corporation 1998

To Order Parts . . .

Call: 1-888-227-2233

OR

Write: Cascade Corporation, 2501 Sheridan Ave., Springfield, OH 45505

10-98

Part No. 215938