



Technical Bulletin

Number 112
June, 1979

C-SERIES SIDESHIFTER OPERATING SPEED

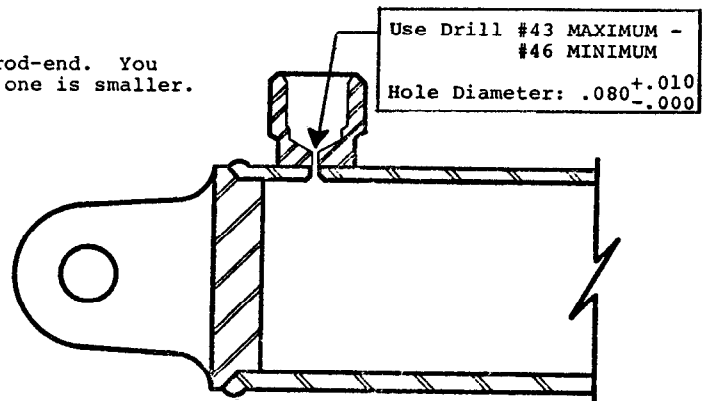
Models Affected: 30C and 55C Sideshifters dated prior to 5/79
(5th week of 1979; date is stamped on cylinder)

Operating speeds on Cascade Model 30C and 55C Sideshifters have been increased by enlarging the port opening from .060 inches to $.080^{+.010}_{-.000}$ inches on current production units. This increased port opening provides a significant increase in operating speed.

Sideshifters presently in the field may also be modified to achieve this increase in operating speed by increasing the port* opening from .060 inches to $.080^{+.010}_{-.000}$ inches.

To make this field modification, disassemble the cylinder and enlarge the port opening, using a #43 drill bit (Maximum) - #46 drill bit (Minimum) Refer to the Sideshifter Service Manual, Form 5142, for the complete disassembly instructions.

* This port opening may be at the base-end or the rod-end. You must check both port openings to determine which one is smaller. The smaller one is the one to drill.



CAUTION: Prior to reassembly, carefully inspect the inside of the shell and remove any burrs with a butterfly hone. Thoroughly clean the inside of the shell. Burrs, shavings or metal dust in the cylinder will destroy the packings and can damage the complete cylinder.

WARNING: DO NOT INCREASE THE PORT OPENING BEYOND THE MAXIMUM .090 INCH DIAMETER RECOMMENDED BY CASCADE. Port hole diameters exceeding this dimension will allow the sideshifter to operate at excessive speeds. This will affect the trucks stability during high lift operations.



cascade[®]
corporation

P.O. Box 20187 • Portland, Oregon 97220 • (503) 666-1511
P.O. Box 360 • Springfield, Ohio 45505 • (513) 325-9271

Do you have questions
you need answered
right now?

Dial Directline
800-547-5266
(toll free)