



Installation Instructions

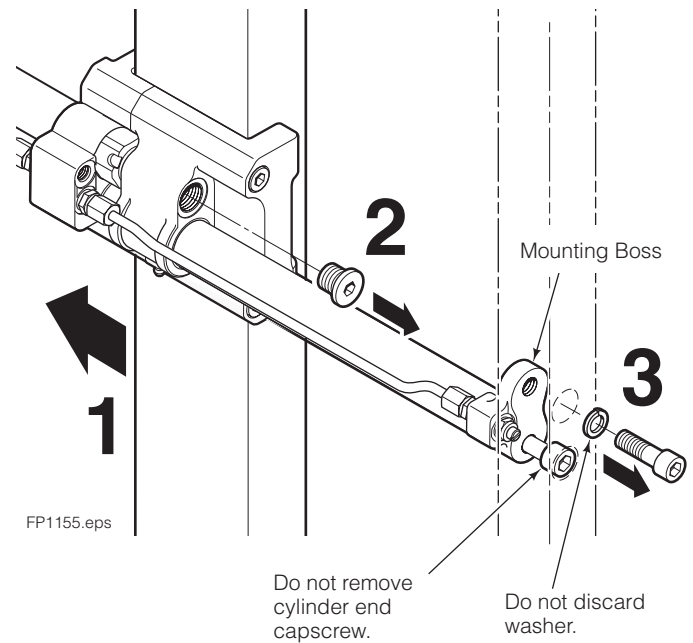
55K Fork Positioner Field Retrofit Kit 6081709

This Instruction Sheet provides instructions on retrofitting 55K Fork Positioners to have a total reduction of 75 mm of fork position outward stroke. Spacers are installed in the fork retainers to reduce fork position stroke. Kit nuts are used as jam nuts to aid with spacer installation and as stops for the installed spacers during operation.

1 Retract forks completely to allow room to work.

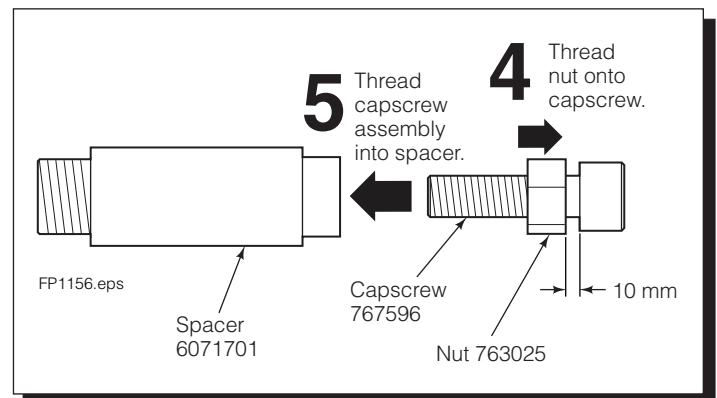
2 Remove fitting plugs from the fork carriers.

3 Remove mounting boss capscrews (not end of cylinder). Keep washers and discard capscrews.



4 Thread kit nut onto kit capscrew until nut is 10 mm from the capscrew head. Thread capscrew/nut assembly into the spacer until the nut contacts with the spacer.

5 Tighten the capscrew, while keeping the nut stationary, until the capscrew no longer threads into the spacer.



NOTE: This information should not be interpreted as the basis for warranty claims unless so designated.

cascade[®]
corporation

For Technical Support . . .

Call: 1-800-227-2233 Fax: 1-888-329-8207

Internet: www.cascorp.com

Write: Cascade Corporation, PO Box 20187, Portland, OR 97294

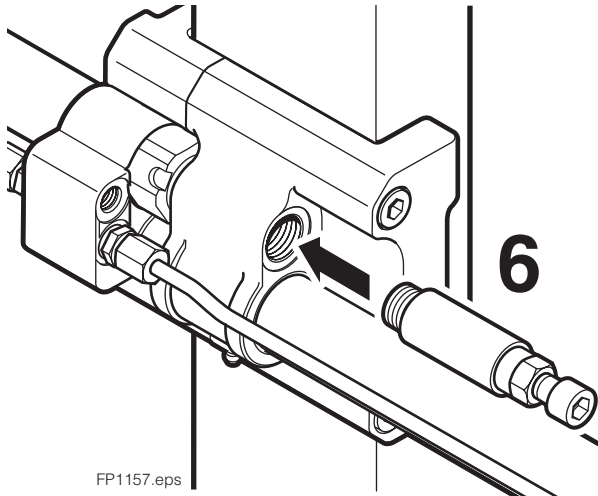
To Order Parts . . .

Call: 1-888-227-2233 Fax: 1-888-329-0234

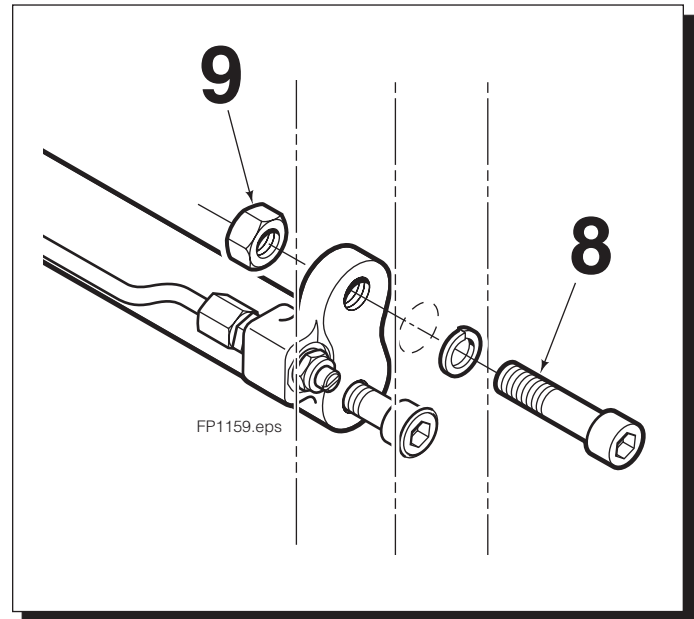
Internet: www.cascorp.com

Write: Cascade Corporation, 2501 Sheridan Ave., Springfield, OH 45505

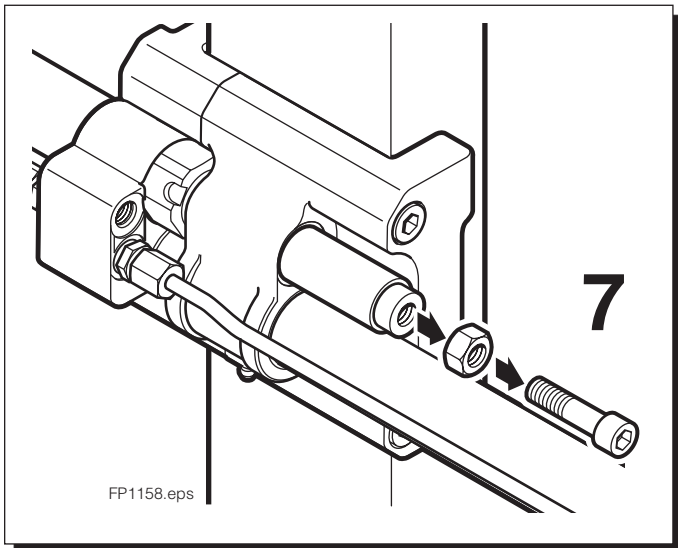
- 6** Install the spacer assembly into the fitting port and torque the spacer assembly, using the capscrew, to 50 ft.-lbs. (65 Nm).



- 8** Install capscrew into the fork position mounting hole. Tighten to a torque of 50 ft.-lbs. (65 Nm).
9 Install nut onto capscrew. Tighten to a torque of 50 ft.-lbs. (65 Nm).



- 7** Keeping the nut stationary, unscrew the capscrew from the spacer. Remove the nut from the capscrew.



- 10** Repeat steps 4 through 9 for opposite side of fork positioner.
11 Verify that all 4 mounting capscrews are 50 ft.-lbs. (65 Nm).
12 Verify that the spacer is making contact with the nut by spreading the forks.
13 Place pinch point decals on the face of the fork positioner

