



Installation Service and Parts Manual

Midline Take-up Reel

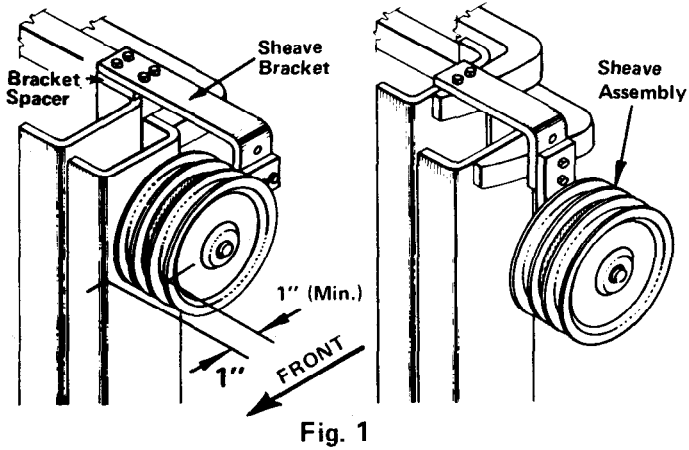
Manual Number 671118 R1

cascade[®]

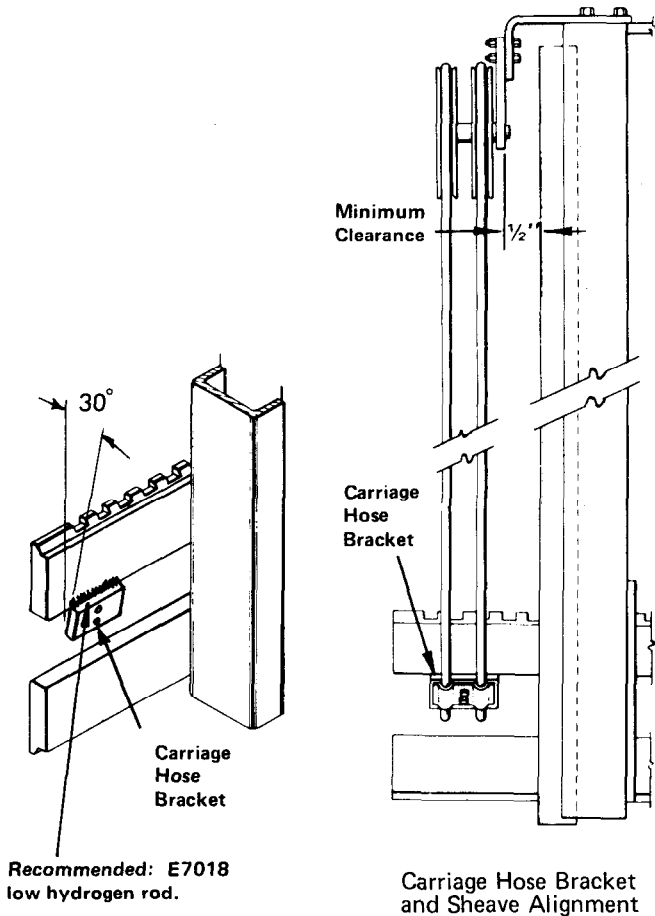
Cascade is a Registered Trademark of Cascade Corporation

INSTALLATION

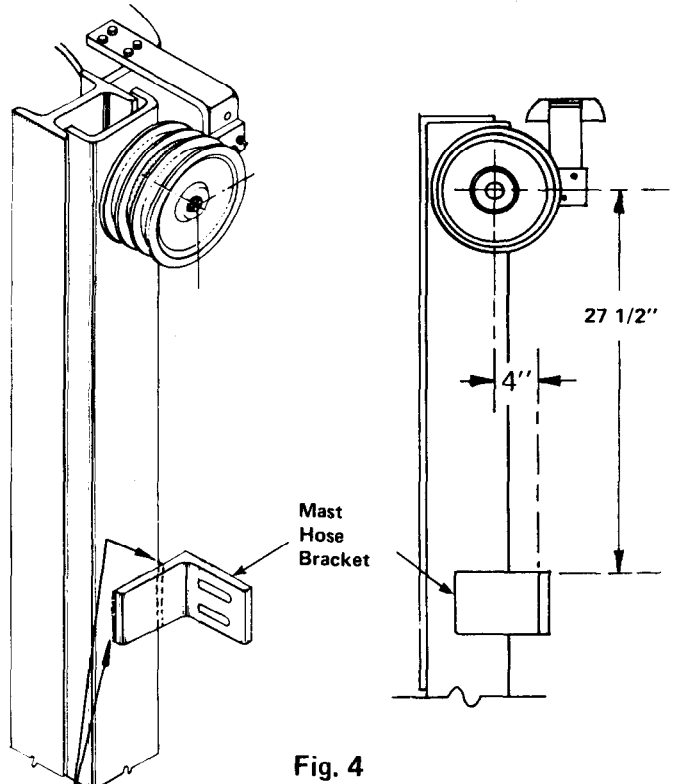
- 1 Fasten the sheave assembly to the sheave bracket.
- 2 Weld or bolt the sheave bracket to the top of the inner mast channel. See clearance and optional sheave mounting position in figures 1 through 5. Use the sheave bracket spacer if needed.



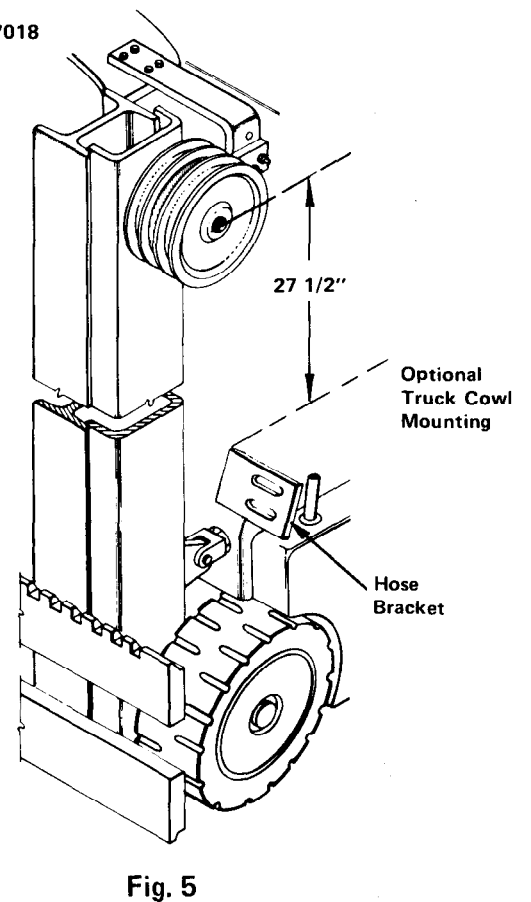
- 3 Weld the carriage bracket at a 30° angle to bottom back side of the top carriage bar directly below the sheave assembly. See figures 2 and 3.



- 4 Weld the mast hose bracket to the mast outer upright or truck cowl. See figures 4 and 5.
- 5 Route the hoses over the sheave assembly. Fasten the hoses loosely to the carriage and mast hose brackets. See figure 3.



Weld on Vertical Surfaces only. (E7018 low hydrogen rod recommended.)



- 6 Remove both hose reel flanges.
- 7 Remove the hose clamp at the center of the hose reel. See figure 7.

WARNING: Remove the two outer nuts and hose clamp only. The center bolts must stay secured in place.

- 8 Place the hose reel on the hoses. The spring release pin must be forward of spool stop. Position the top idler sheaves 1/2" below the sheave assembly. See figure 6.
- 9 Clamp the hose to the hose reel. Two hose clamps are provided, one for No. 6 hose, and a larger one for No. 8 hose. Caution should be used in selecting the correct clamp. Discard the unused clamp.

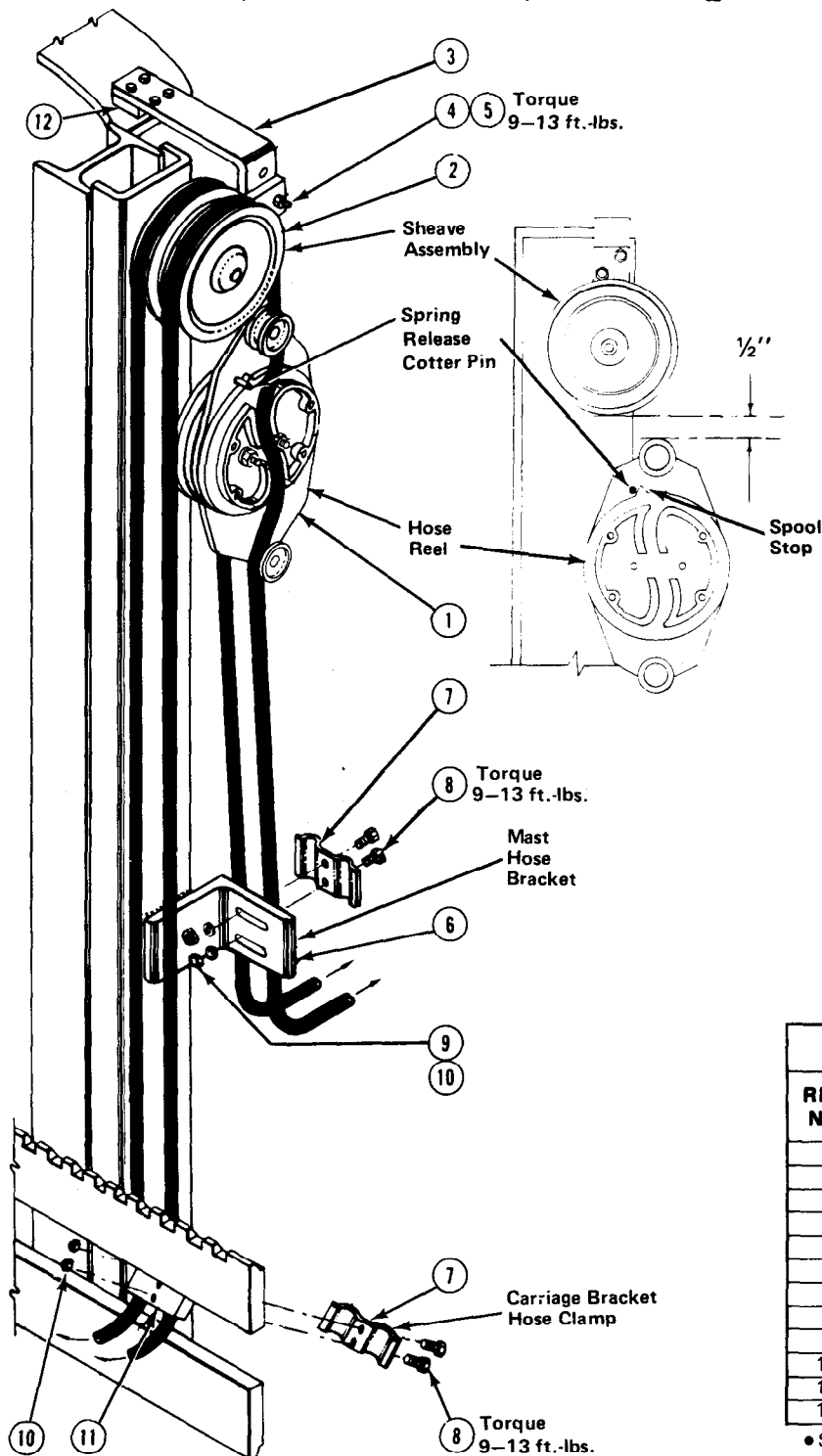


Fig. 6

- 10 Tighten the carriage bracket hose clamp. Remove any twisting or slack in the hose. Tighten the mast bracket hose clamp. Replace the hose reel flanges.
- 11 Perform a final installation check. Pull down on hoses between hose reel and carriage by hand. Remove the spring release cotter pin. Release hose tension. The hose reel is now ready for operation.



WARNING: This device is spring loaded and can cause injury if improperly disassembled.

- 12 **Hose Reel Removal** - Pull down on hoses between hose reel and carriage by hand. Install spring release cotter pin in pin hole. Release hose tension until spool stop rests on cotter pin. Remove reel flanges and hose clamp. Remove reel assembly from hoses.



WARNING: Do not remove the two inner nuts. This device is spring loaded and may cause injury.

Only one hose clamp is used. Do not install clamp on opposite side.

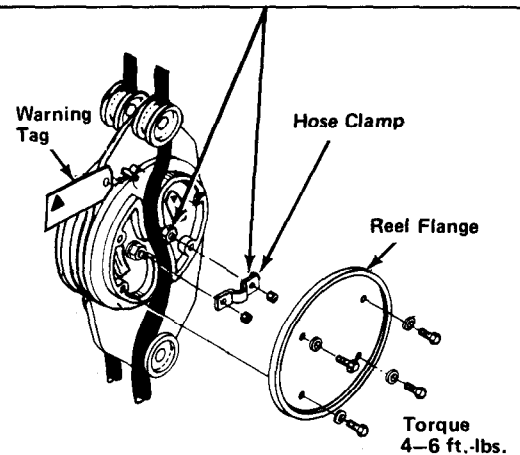


Fig. 7

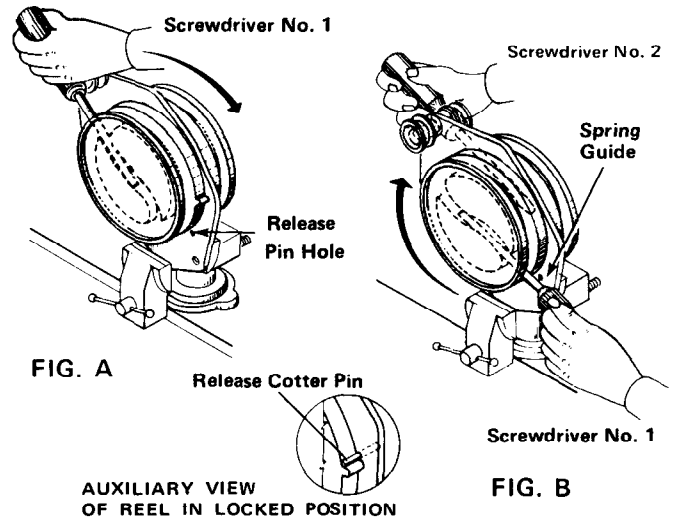
PARTS LIST

REF. NO.	QTY.	PART NO.	DESCRIPTION
1	1	•	Reel Assembly
2	1	•	Sheave Assembly
3	1	646356	Sheave Bracket
4	2	3628	Capscrew, 7/16 NC x 1.0
5	1	6289	Lockwasher
6	1	640194	Mast Hose Bracket
7	2	640196	Hose Clamp
8	4	3579	Capscrew, 5/16 NC x 1.5
9	4	6202	Plain Washer
10	4	6098	Nut, 5/16 NC
11	1	640195	Carriage Hose Bracket
12	1	640197	Spacer

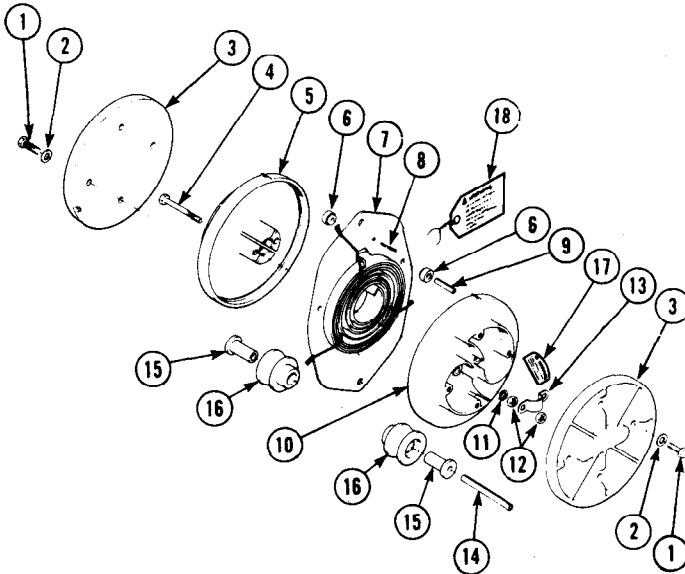
• See next page for complete parts list.

SPRING RELOADING PROCEDURE

- 1 Assemble hose reel with flanges.
- 2 Remove one set of idler sheaves by driving out the roll pin. This will allow easy access to the reel.
- 3 Clamp spring guide tightly in vise as shown in figure A.
- 4 Insert firmly a heavy screwdriver or a pry-bar in slot as shown in Figure A.
- 5 Rotate hose reel in the direction shown in Figure A.
- 6 When screwdriver No. 1 reaches the down position, hold it firmly with one hand, and use the other hand to insert screwdriver No. 2 as shown in Figure B, continue rotating reel. A total 1½ turns of spring is required.
- 7 Insert release cotter pin to lock the spring guide in place.



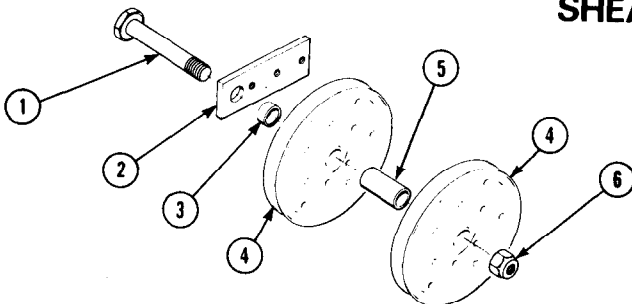
REEL ASSEMBLY



REF. NO.	QTY.	PART NO.	DESCRIPTION
		660424	Reel Assembly
1	8	666937	Capscrew
2	8	6389	Washer
3	2	637129	Flange
4	2	3561	Capscrew, 1/4 NC x 2.50
5	1	637125	Spool, R.H.
6	6	641201	Bearing
7	1	637121	• Guide/Spring Assy.
8	1	6533	Cotter Pin, 3/16 dia.
9	3	7910	Roll Pin
10	1	637127	Spool, L.H.
11	2	6286	Lockwasher
12	4	5900	Nut, 1/4 NC
13	1	637131	Single Clamp (No. 6 Hose)
	1	637130	Single Clamp (No. 8 Hose)
14	2	7933	Roll Pin
15	4	637124	Spacer
16	4	637123	Idler Sheave
17	1	671058	Decal, Warning
18	1	671060	Tag, Warning

• If replacing Spring Assembly as a service part, cut and discard three retainer wires before assembly.

SHEAVE ASSEMBLY



REF. NO.	QTY.	PART NO.	DESCRIPTION
		640198	Sheave Assembly
1	1	3370	Capscrew, 5/8 NF x 4.5 GR5
2	1	646303	Bar
3	1	637310	Spacer
4	2	637308	Sheave
5	1	640202	Spacer
6	1	15193	Nut, 5/8 NF

Do you have questions you need answered right now?
Call Cascade Parts or Service Departments.

Cascade Parts Depot
2501 Sheridan Avenue
P.O. Box 360
Springfield, Ohio 45505
Tel.: (513) 322-1199
Telex: 205413

Cascade Corporation
P.O. Box 20187
2201 N.E. 201st Ave.
Portland, OR 97230
Tel.: 503/666-1511
800-227-2233 (Toll Free)
CAS-CADE
Telex: 360411
Cable: Cascade Ptl

