



Deliver a perfect roll every time



Roll Damage: An all too familiar problem



SOLVE TORN LAYERS AND SCUFFING WITH:

- Rotational Control
- Tilt Control
- Adjustable Bumper
- Application-Specific Pads
- Drop-Stop Valve
- Split Arm
- Digital Display
- Swing Frame



SOLVE OUT-OF-ROUNDNESS & CORE CRUSHING WITH:

- Multi-Setting Relief Valve
- AFC (Adaptive Force Control)
- Load Cushion™
- Clamp Force Indicator
- Light Bar Kit
- Digital Display



SOLVE EDGE DAMAGE WITH:

- Rotational Control
- Tilt Control



SOLVE ROLL DROPPING WITH:

- AFC (Adaptive Force Control)
- Clamp Force Indicator
- Adjustable Bumper
- Tilt Control
- Rotational Control
- Digital Display



Cascade Damage Redu Designed to d

MULTI-SETTING PRESSURE RELIEF VALVES

Basic method for controlling the amount of pressure applied to the paper roll. Manual and electronic versions available.



AFC

AFC (Adaptive Force Control) is a computer-controlled clamping system that automatically controls the clamp force in proportion to the load weight.



DIGITAL DISPLAY

Shows the clamping pressure in the circuit, indicating that the clamping circuit is functioning properly.



Options for Pressure Control

LOAD CUSHION™

Hoist System Accumulator that absorbs shocks and reduces the clamp force required to handle the load.



DROP-STOP VALVE

Prevents clamp pads from sliding down roll and tearing paper after unclamping roll in slack-chain condition.



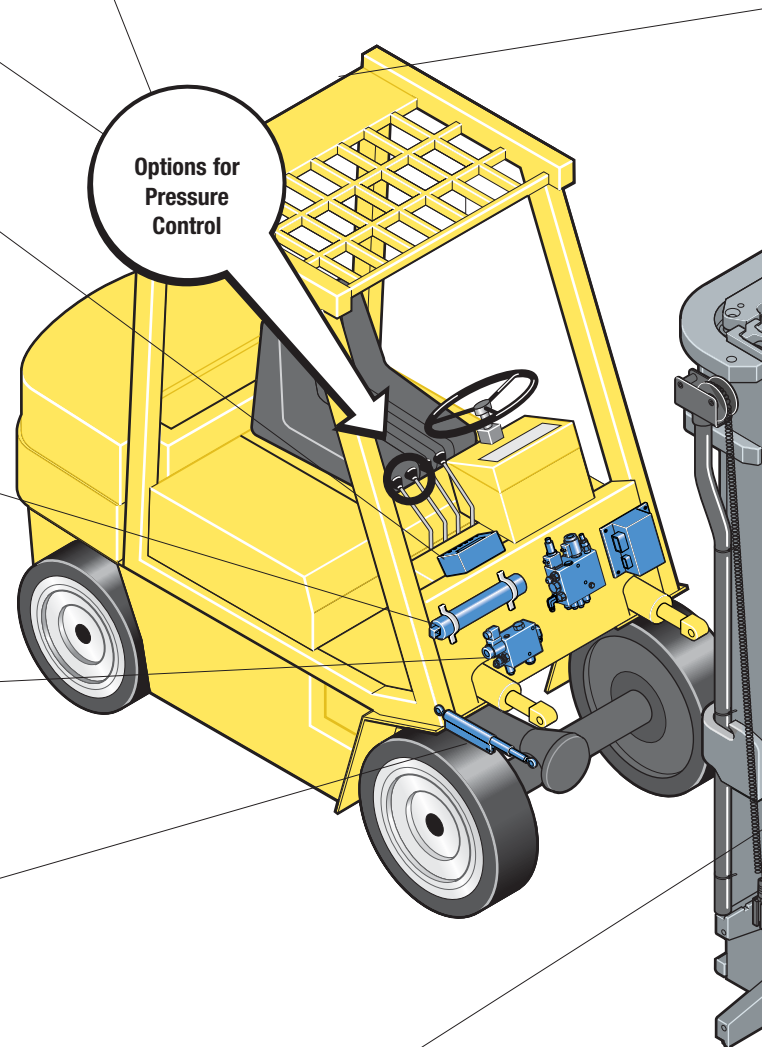
TILT CONTROL

Automatically controls the angle of the mast and attachment, which automatically aligns pad to roll, and roll to floor. Use in conjunction with Rotational Control.

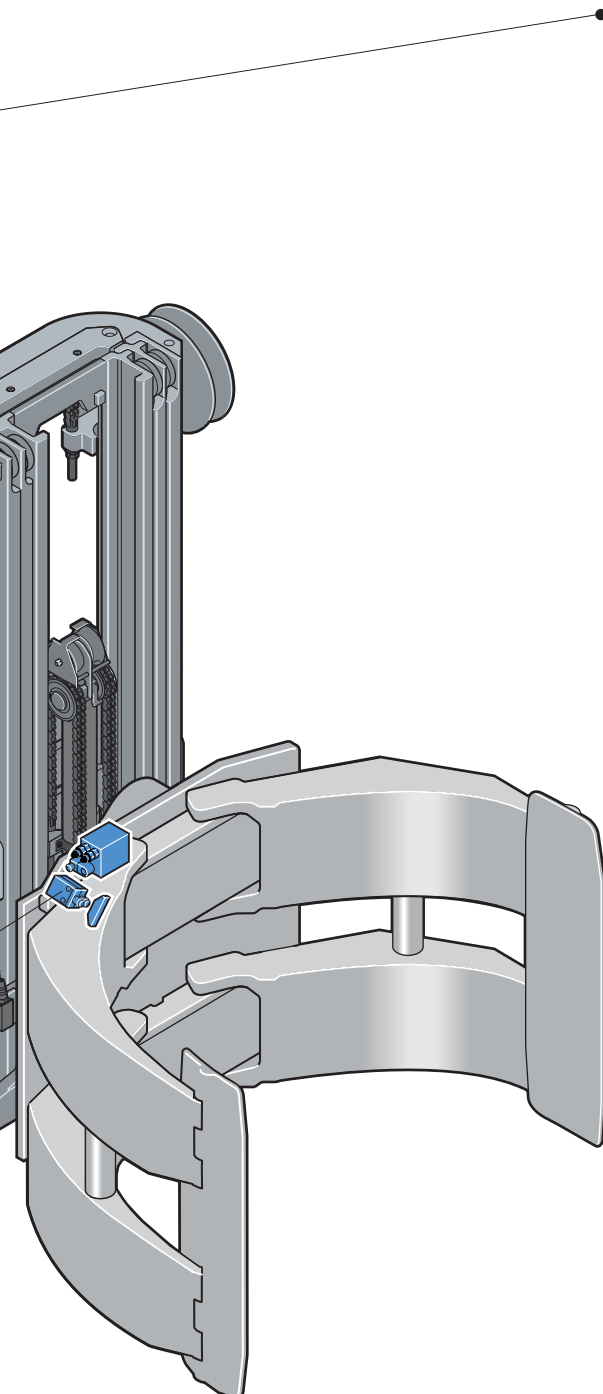


ROTATIONAL CONTROL

Provides 90° (bilge) & 180° stops during 360° clamp rotation, which automatically aligns pad to roll. Positions the roll perfectly horizontal and vertical to the floor. Use in conjunction with Tilt Control.



Function Options: Deliver perfect rolls



LIGHT BAR KIT

The light bar shows the pressure setting in use when installed with the Multi-Setting Pressure Relief Valve.



SWING FRAME

Swing Frame models offer you the optimum in roll handling speed and capability. The lateral 'swing' or sideshifting function adds an extra dimension of flexibility to the clamp's breakout and tight stacking capabilities.



APPLICATION SPECIFIC CONTACT PADS

The correct pad is provided depending on the type of paper being handled. Use of the correct pad allows clamp pressure to be minimized.



ADJUSTABLE BUMPER

Ensures that smaller rolls are correctly positioned between the pads – not trapped in the arms. Not available on Split-Arm models.



CLAMP FORCE INDICATOR

Measuring device that shows the clamp force applied to the load. Used for clamp pressure calibration with systems using pressure relief valves.



SPLIT-ARM

Allows secure handling of two stacked rolls of different diameters. Patented hydraulic circuit allows clamping of one roll with minimum top-arm movement.



A pad for every paper



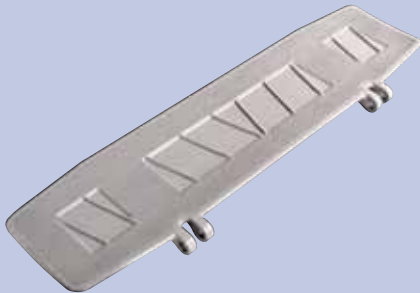
CASCADE CAST PAD

Appropriate for most paper handling.



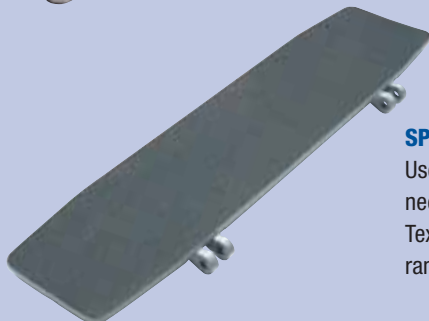
BOLT-ON RUBBER & URETHANE

Used when handling difficult-to-grip papers such as milk carton stock or when increased friction to reduce clamp force is necessary. Pads are easy to replace.



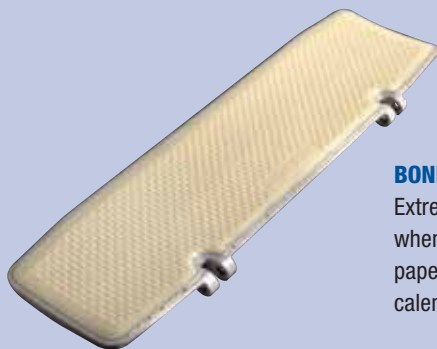
RIBBED CAST

Used with difficult-to-handle recycled kraft papers.



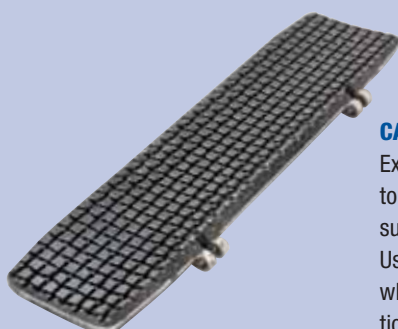
SPRAY-METAL

Used in various applications needing optional pad sizes. Textured surface for broad range of papers.



BONDED URETHANE

Extremely durable surface. Used when handling difficult to grip papers, such as calender stock.

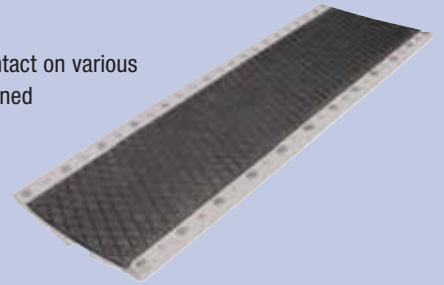


CARBONLESS

Extra thick cross hatched surface to provide a cushioned clamping surface and excellent friction. Used in carbonless applications where slight (up to 1/4") variations in roll diameter exist on narrow width rolls.

FLEXIPAD

Provides full pad contact on various diameter rolls. Designed primarily for newsprint industry.



HINGED PAD

Hinged pad that conforms to various roll diameters.



BONDED RUBBER

Used in applications where a resilient surface is beneficial such as newsprint, or when increased friction is required.



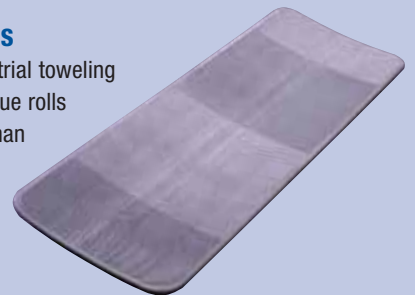
IRATHANE COATED

Kraft and polywrapped paper rolls, linerboard-coated, white printing.



TISSUE, SINGLE RADIUS

Used for handling industrial toweling and wrapped dense tissue rolls less prone to damage than softer rolls.



TISSUE, DOUBLE DIAMETER

Used for common tissue and toweling grades. Reduces cutting at end of contact pad.



TISSUE, CONVEX

For use in handling super soft tissue. Reduces cutting at periphery of contact pad area.



Cascade clamps are the total solution

Cascade has a clamp for any size, weight or type of roll you are handling. Combine with our damage reduction options for the total solution.



SINGLE, SMALL ROLL

25F – Perfect for handling smaller rolls of newsprint, form and printing stocks.



SINGLE, MEDIUM TO LARGE ROLL

45F, 60F, 60G, 66G, 72G, 90F, 100F, 100D – Designed for mills, warehouses, corrugators and converters handling kraft, linerboard and coated papers.



JUMBO, BIG ROLL

120F, 130F, 150F, 160F – High production roll clamp for wide printing paper handling of kraft, linerboard and coated stock.



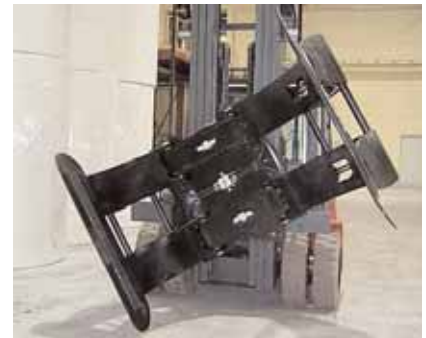
SLIDING ARM

50D, 66D, 70D, 80D, 100D – When arm thickness is an issue, Sliding Arm model offers a narrow clamp arm profile.



SINGLE & DOUBLE TOWER

100F, 110F, 130F, 190F, 220F, 260F – Designed for mills and stevedores where multiple roll handling is essential. Handle from 2 to 8 rolls of newsprint, coated stock, kraft or linerboard.



TISSUE ROLL

Designed for gentle handling of tissue rolls.



PIVOT ARM - MULTI ROLL

100F, 120F, 130F, 150F, 220F – Designed for mills and stevedores where multiple roll handling improves productivity. For handling newsprint, coated stock, kraft and linerboard.



360° ROTATIONAL CONTROL

Damage can occur when the roll is being moved from a loading dock onto a truck or boxcar. With Cascade's 360° rotation, potentially damaging situations like loading on uneven ground are eliminated.

cascade
EUROPE

www.cascorp.com

EUROPEAN HEADQUARTERS

Damsluisweg 56
P.O. Box 3009
1300 EL Almere
The Netherlands
Tel. 31-36-5492911
Fax 31-36-5492964

Cascade (UK) Ltd.

Unit 4, 12 O'Clock Court
Attercliffe Road
Sheffield, S4 7WW
England
Tel. +44 (0) 870 850 8756
Fax +44 (0) 870 850 8757